

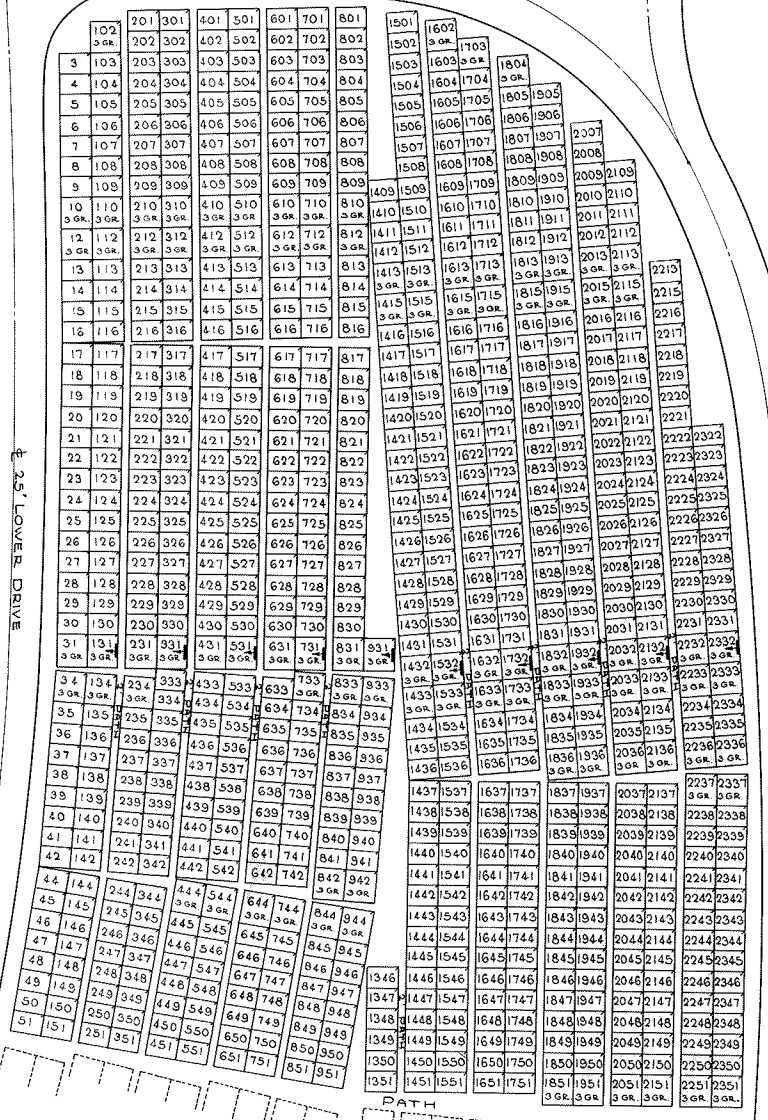
SEC. 16

SEC. 16

± 25' LOWER DRIVE

± 20' UPPER DRIVE

SEC. 25

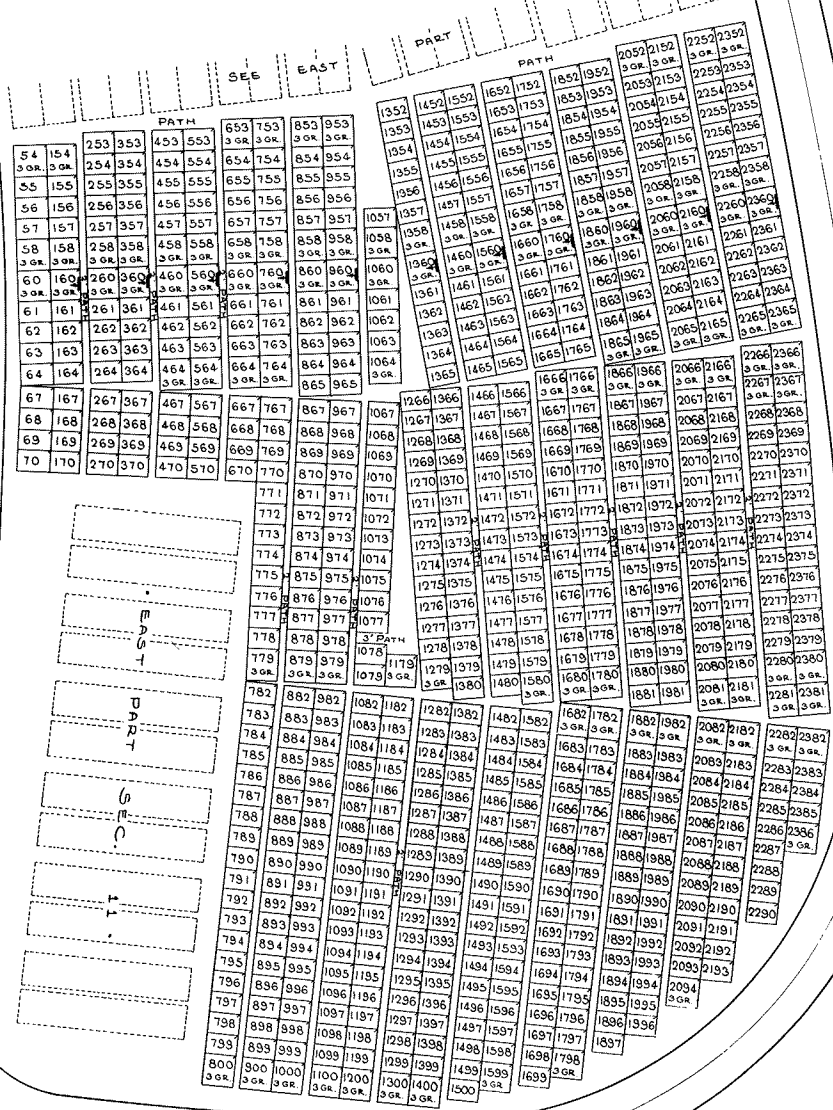


PATH
SEE WEST PART.

LOT SUMMARY
791 - 3 GR. LOTS
881 - 3 GR. LOTS
881 TOTAL LOTS

NOTE: LOCATION OF GRAVE MARKERS
ARROW INDICATES DIRECTION GRAVE
MARKERS WILL FACE.
ALL LOTS ARE 2 GRAVE LOTS UNLESS
OTHERWISE NOTED.
ALL 3 GRAVE LOTS ARE 6'x9'.
THE LOT NUMBER IS PLACED IN THE
UPPER LEFT HAND CORNER OF THE
LOT AND THE NUMBER OF GRAVE LOTS AND IS
INDICATED BY THIS

HOLY CROSS CEMETERY
ARLON, OHIO
EAST PART
SECTION 17
SCALE 1"=20'
G.C.A.
JUNE, 1893



NOTE:
 LOCATION OF GRAVE MARKERS
 SHOWN IN THIS PLAN
 ARROWS INDICATE DIRECTION GRAVE
 MARKERS WILL FACE.
 ALL LOTS ARE 3 GRAVE LOTS UNLESS
 OTHERWISE NOTED.
 ALL 3 GRAVE LOTS ARE 6'x3'
 ALL 2 GRAVE LOTS ARE 6'x3'
 THE LOT NUMBERS IS PLACED IN THE
 UPPER QUARTER CORNER OF THE
 LOTS AS YOU FACE THE LOTS AND IS
 INDICATED THUS

LOT SUMMARY:
 694 - 3 GR LOTS
 106 - 2 GR LOTS
 800 - TOTAL LOTS

HOLY CROSS CEMETERY
 WEST PART
 SECTION 17

SCALE 1"=20' G.C.A. JUNE, 1963

Sec. 16

Sec. 26

Sec. 25

Sec. 20